



**Lou Ann Texeira**  
*Executive Officer*

**MEMBERS**

**Helen Allen**  
*City Member*

**Federal Glover**  
*County Member*

**Martin McNair**  
*Public Member*

**Gayle B. Uilkema**  
*County Member*

**Dwight Meadows**  
*Special District Member*

**David A. Piepho**  
*Special District Member*

**Rob Schroder**  
*City Member*

**ALTERNATE MEMBERS**

**Vacant**  
*Public Member*

**George H. Schmidt**  
*Special District Member*

**Mary N. Piepho**  
*County Member*

**Don Tatzin**  
*City Member*

October 14, 2009 (Agenda)

Contra Costa Local Agency Formation Commission  
651 Pine Street, Sixth Floor  
Martinez, CA 94553

**Supplemental Report - Fire & Emergency Medical Services Sphere of Influence Updates**

Dear Members of the Commission:

On October 7, per the Commission's direction, the Fire Committee met to further discuss governance and sphere of influence (SOI) options, along with sub-regional and regional issues.

The meeting was attended by representatives from the County, cities, fire districts, labor and members of the general public. Informational updates were provided by various cities and districts, including updates from the City of Pinole regarding the West County Task Force on Fire Service (Attachment 1), and from the East Contra Costa Fire Protection District regarding the East County Fire Committee. In addition, the San Ramon Valley Fire Protection District (SRVFPD) submitted a letter (Attachment 2) indicating their position on various governance and SOI options.

Based on deliberations and comments received at the committee meetings, the Fire Committee submits governance structure and SOI recommendations as presented in Attachment 3. The Governance Structure Option numbers shown in Attachment 3 correspond to those presented to the Commission in August 2009. The Committee recommends adopting the SOI updates after concluding that taking such action will not reduce the need or incentive for the fire districts to act on the larger issues discussed in the MSR and by the Commission.

In addition to the recommendations provided in Attachment 3, the Fire Committee submits the following three recommendations:

- ❖ *East County* – Acknowledge the formation and efforts of the East County Fire Committee; request that the Committee provide an update to LAFCO at the January 13, 2010 LAFCO meeting.
- ❖ *West County* - Acknowledge the formation and efforts of the West County Task Force on Fire Service; request that the Task Force provide an update to LAFCO at the January 13, 2010 LAFCO meeting.

- ❖ *Countywide* - Convene a countywide fire workshop within 30-45 days to discuss fire issues. Some of the suggested topics include regional fire consolidation, governance and fiscal issues. The Commission should discuss the format of the workshop (i.e., workshop of the LAFCO Fire Committee or full Commission), timing (e.g., in conjunction with a regular LAFCO meeting), and specific agenda topics. There was also a suggestion at the Fire Committee meeting of possibly using a facilitator.

## RECOMMENDATIONS

1. Adopt the Fire Committee's governance and SOI recommendations as presented above and in Attachment 3.
2. Adopt the attached resolutions that correspond to the Fire Committee's SOI recommendations.
3. Adopt the three recommendations regarding the East County Fire Committee, the West County Task Force on Fire Service, and convening a workshop to discuss consolidation and related fire service issues.

Sincerely,

LOU ANN TEXEIRA  
EXECUTIVE OFFICER

c: Distribution

Attachments:

1. Memo dated September 15, 2009 from West County City Managers Regarding Formation of a West County Fire Subcommittee
2. Letter dated October 6, 2009 from Stephen P. Morgan, SRVFPD
3. Table – Fire Committee's Governance Structure and SOI Recommendations
4. SOI Resolutions
  - a. CCCFPD
  - b. MOFD
  - c. SRVFPD
  - d. ECCFPD
  - e. CSA EM-1



# CITY OF PINOLE

City Manager's Office

2131 Pear Street  
Pinole, CA 94564  
Phone: (510) 724-8933  
FAX: (510) 724-9826  
[www.ci.pinole.ca.us](http://www.ci.pinole.ca.us)

**TO: WEST COUNTY MAYORS ASSOCIATION**

**FROM: BELINDA B. ESPINOSA, CITY MANAGER CITY OF PINOLE  
BROCK ARNER, CITY MANAGER CITY OF SAN PABLO  
SCOTT HANNIN, CITY MANAGER, CITY OF EL CERRITO  
NELSON OLIVA, CITY MANAGER CITY OF HERCULES  
BILL LINDSAY, CITY MANAGER CITY OF RICHMOND**

**DATE: SEPTEMBER 15, 2009**

**SUBJECT: CITY MANAGERS RECOMMENDATION TO FORM A SUBCOMMITTEE  
TO DISCUSS FIRE SERVICE DELIVERY IN WEST COUNTY**

At the July 23, 2009 West County Mayors Association meeting, the Mayors discussed the Municipal Service Report that LAFCo recently completed on fire service delivery throughout the County. The Mayors directed that the City Managers meet to discuss and develop a recommendation for a West County Subcommittee to study the report recommendations, determine if there are additional alternatives that should be studied and to work with LAFCo in their deliberations.

The City Managers met on August 27, 2009 and have the following recommendations to the West County Mayors for the subcommittee participants:

- Keep the West County Mayors Association with the addition of one Boardmember from the Rodeo-Hercules Fire Protection District as the Subcommittee to LAFCo for the purposes of meeting with LAFCo and forwarding recommendations representing West County cities, districts, and unincorporated areas.

When the issue of Fire Services is on the West County Mayors agenda, the Rodeo-Hercules Fire Protection District Boardmember will be asked to attend.

- A Technical Advisory Committee to the Mayors will be established to provide the technical advice and analytical information on the various options and alternatives.

This committee will report directly to the West County Mayors at their monthly meetings and will include 10 members who will meet separately and on a regular basis. Included are:

- 3 City Managers, one from the cities of Pinole, San Pablo, and Hercules
- 5 Fire Chief's, one from Contra Costa Fire Protection District, the cities of Pinole, El Cerrito and Richmond Fire Departments, and the Rodeo-Hercules Fire Protection District.
- 1 Representative from Local 1230 (Contra Costa Fire, City of Pinole and Rodeo-Hercules Fire Protection District); and
- 1 Representative from Local 188 (Richmond Fire)

It is anticipated that the City Managers will present this recommendation to the West County Mayors on their September agenda for discussion.

October 6, 2009

Ms. Lou Ann Texiera  
Executive Officer  
Contra Costa LAFCO  
651 Pine Street, Sixth Floor  
Martinez, CA 94553-1229

Dear Ms. Texiera,

Due to a last-minute scheduling conflict, I will be unable to attend the October 7, 2009 meeting of the Fire and Emergency Services Ad-hoc Committee on behalf of San Ramon Valley Fire Protection District.

In case there is any question as to the District's position on the agenda items, let me summarize it here briefly:

- a) We support the Committee's recommendation to approve the expansion of the District's SOI into previously annexed areas (Tassajara, Morgan Territory, and Bogue Ranch.)
- b) We support the Committee's recommendation to encourage cooperation between ourselves and the neighboring agencies in the North Dublin and Crow Canyon areas.
- c) We support the deferral or tabling of any action to extend our SOI into North Alamo.
- d) We oppose any LAFCO-initiated consolidation that would include SRVFPD. However, as I said at the August LAFCO meeting, we welcome the opportunity to participate in any discussion related to the future of fire protection in the County and would be more than happy to provide assistance to any fire agency considering reorganization.

I apologize for not being able to attend the committee meeting in person, but I will be available for next week's regular meeting of the Commission if any fire-related items are on the agenda.

Sincerely,

Stephen P. Morgan  
San Ramon Valley Fire Protection District

## FIRE COMMITTEE'S GOVERNANCE AND SPHERE OF INFLUENCE (SOI) RECOMMENDATIONS<sup>1</sup>

Governance Structure Option	SOI Action	Recommendations
<b>Central County</b>		
<b>ConFire</b>		
1. Annex areas within ConFire's service areas currently within ECCFPD's bounds (e.g., area southeast of Clayton)	Expand SOI to include area southeast of Clayton	Approve SOI expansion
3. Clean-up	Remove Bogue Ranch from SOI which was previously annexed to SRVFPD (linked with option 11)	Approve SOI clean-up
4. Clean-up	Remove 101 acres in Orinda from SOI which was annexed to MOFD in 1998 (linked with option 7)	Approve SOI clean-up
<b>MOFD</b>		
7. Clean-up	Expand SOI to include 101 acres annexed to MOFD in 1998 ((linked with option 4)	Approve SOI clean-up
10. Encourage agencies to communicate regarding road/water infrastructure challenges and report back to LAFCO within 12 months		Approve (added by Committee)
<b>SRVFPD</b>		
11. Clean-up	Expand SOI to include previously annexed areas (Tassajara Valley/Morgan Territory, Bogue Ranch) (partially linked with option 3)	Approve
12. Align boundary with service call areas (i.e., north Dublin and Crow Canyon areas)	Increase SOI to include north Dublin and Crow Canyon areas	Encourage agencies to work together to achieve service/fiscal balance
<b>East County</b>		
<b>ConFire</b>		
14. Clean-up	Expand SOI to include eastern boundary areas in cities of Antioch and Pittsburg already served by ConFire	Approve
16. Annex Roddy Ranch property currently within ECCFPD's bounds/ service area	Expand SOI to include Roddy Ranch property (linked with option 22)	Approve

<b>ECCFPD</b>		
22. Detach Roddy Ranch property	Remove Roddy Ranch property from SOI (linked with option 16)	Approve
<b>Governance Structure Option</b>	<b>SOI Action</b>	<b>Recommendations</b>
<b>West County</b>		
<b>ConFire</b>		
38. Detach west county service areas (i.e., San Pablo, El Sobrante, Bayview, Alhambra Valley, East Richmond Heights) and annex to a future west county consolidated provider	Continue to exclude from ConFire’s SOI the western boundary areas (i.e., City of San Pablo, and unincorporated areas including Bayview, East Richmond Heights, El Sobrante, Montalvin Manor, North Richmond, Tara Hills) in anticipation of a future west county consolidation	Take no action. Continue to exclude from ConFire’s SOI western boundary areas (i.e., City of San Pablo, and unincorporated areas including Bayview, East Richmond Heights, El Sobrante, Montalvin Manor, North Richmond, Tara Hills) in anticipation of a future west county consolidation
<b>Kensington (KFPD)</b>		
48. Consolidation with Kensington CSD	Adopt zero SOI in anticipation of future consolidation	Take no action. Committee does not support this option
<b>CSA EM-1</b>		
58. None identified	Retain existing SOI	Retain existing SOI

<sup>1</sup>The numbers for each recommended action conform to the master list of Governance Structure Options discussed at the August 12 LAFCO meeting.

**RESOLUTION OF THE CONTRA COSTA LOCAL AGENCY FORMATION COMMISSION**

**APPROVING A SPHERE OF INFLUENCE UPDATE FOR  
CONTRA COSTA COUNTY FIRE PROTECTION DISTRICT**

**WHEREAS**, Government Code §56425 requires the Local Agency Formation Commission (LAFCO) to develop and determine the sphere of influence (SOI) of each local governmental agency within the County; and

**WHEREAS**, Government Code §56425(f) requires that LAFCO review and update the SOI boundaries, as necessary, not less than once every five years; and

**WHEREAS**, Government Code §56430 requires that a municipal service review be conducted prior to or in conjunction with an SOI update; and

**WHEREAS**, LAFCO conducted a countywide review of fire and emergency medical service providers, including services provided by the Contra Costa County Fire Protection District (ConFire) and adopted written determinations as required by Government Code §56430 on August 12, 2009; and

**WHEREAS**, the MSR report identified a number of SOI and governance structure options for ConFire; and

**WHEREAS**, the District's service boundary encompasses approximately 257 square miles and its SOI is not coterminous with the District's service boundary; and

**WHEREAS**, in updating SOIs for fire service providers, LAFCO should consider the uniqueness of fire service areas as a result of automatic aid, mutual aid and contract service arrangements; and

**WHEREAS**, ConFire's existing SOI extends beyond the District in some areas (i.e., unincorporated Avon area, Bogue Ranch area), and is smaller than the District's boundaries in other areas (i.e., area in the cities of San Pablo, Antioch and Pittsburg, unincorporated areas in Bay Point, East Richmond Heights, El Sobrante, Montalvin Manor, North Richmond, and Tara Hills); and

**WHEREAS**, it is hereby proposed that ConFire's SOI be adjusted as follows: expand SOI to include area southeast of Clayton, Roddy Ranch area, eastern boundary areas in the cities of Antioch and Pittsburg already served by ConFire; remove Bogue Ranch area previously annexed to San Ramon Valley Fire Protection District; remove 101 acres in Orinda previously annexed to Moraga Orinda Fire Protection District; and continue to exclude from ConFire's SOI the western boundary areas (i.e., City of San Pablo, and unincorporated areas including Bayview, East Richmond Heights, El Sobrante, Montalvin Manor, North Richmond, Tara Hills) in anticipation of a future west county fire consolidation, as generally depicted on Exhibit A attached hereto; and

**WHEREAS**, no change in regulation, land use or development will occur as a result of updating the District's SOI; and

**WHEREAS**, in the form and manner prescribed by law, the Executive Officer has given notice of a public hearing by this Commission regarding the SOI action; and

**WHEREAS**, the SOI update was duly considered at public meetings held on April 8, April 22, August 12 and October 14, 2009; and

**WHEREAS**, Contra Costa LAFCO heard and received all oral and written protests, objections and evidence that were made, presented or filed, and all persons present were given an opportunity to appear and be heard with respect to any matter pertaining to said SOI update.

**NOW, THEREFORE, BE IT RESOLVED, DETERMINED AND ORDERED** that Contra Costa LAFCO does hereby:

1. Adjust the SOI for ConFire as described above and generally depicted on Exhibit A attached hereto.
2. Determine, as lead agency for the purposes of the California Environmental Quality Act (CEQA), that the SOI update is categorically exempt under §15061(b)(3) of the CEQA Guidelines, and direct staff to file a Notice of Exemption.
3. Determine that the Commission has considered the criteria set forth in Government Code §56425(e) as follows:
  - a. *The present and planned land uses in the area, including agricultural and open-space lands* – The District bounds encompass a variety of land uses in incorporated and unincorporated areas in the central and northern portions of Contra Costa County including residential, commercial, mixed-use, agricultural, recreational, open space, and watershed. Land uses in the SOI expansion areas include residential and open space in the vicinities of southeast Clayton, and the cities of Antioch and Pittsburg, most of which are already receiving services through ConFire. The District has no land use authority. Contra Costa County and city plans include land uses and population growth that may impact the District’s services. There is Williamson Act land within ConFire’s boundaries and SOI.
  - b. *The present and probable need for public facilities and services in the area* – The District provides fire prevention, suppression and emergency medical response for advanced and basic life support, and dispatch services. There is a present and probable need for public facilities and services. There are a number of future growth areas within and around the District’s bounds, including areas within the cities of Antioch and Pittsburg. Service demand will increase with build-out of these areas. No changes in public facilities or services provided by the District will result from this SOI update.
  - c. *The present capacity of public facilities and adequacy of public services that the agency provides or is authorized to provide* – the MSR report notes that revenues have not kept pace with employee salary/benefit costs, financial resources have not sustained service levels, and many of the District’s capital needs have remained unfunded for the last 20 years. Adjustment of the SOI as proposed will not affect the present capacity of public facilities and adequacy of services provided by ConFire.
  - d. *The existence of any social or economic communities of interest in the area if the commission determines that they are relevant to the agency* – ConFire was formed in 1964 as a county-dependent district; there have been numerous

boundary reorganizations over the last 45 years. The District is funded primarily through property taxes, within limited funding through service charges and intergovernmental revenues. The social and economic communities of interest include the cities of Antioch, Clayton, Concord, Lafayette, Martinez, Pittsburg, Pleasant Hill, San Pablo and Walnut Creek; the Briones Regional Park, Black Diamond Mines Regional Preserve, and the Concord Naval Weapons Station; and the unincorporated communities of El Sobrante, East Richmond and North Richmond. Communities of interest within the SOI expansion areas include the vicinity surrounding Russellmann Park (southeast of the City of Clayton, and the Roddy Ranch area. Communities of interest within the SOI reduction areas are those located in Bogue Ranch and Orinda. Property owners within the District have an economic interest in receiving services from this investment. The SOI update will not affect the existence of any social or economic communities of interest in the areas that are relevant to ConFire.

- e. *Nature, location, extent, functions & classes of services to be provided* – ConFire’s service boundary encompasses approximately 257 square miles. The District provides fire prevention, suppression and emergency medical response for advanced and basic life support, and dispatch services. Ambulance transport is provided by AMR, a privately-owned ambulance company. ConFire has 28 staffed fire stations and two unstaffed stations. Fire stations are located throughout the western, central and eastern portions of the District’s boundary area.

\* \* \* \* \*

PASSED AND ADOPTED THIS 14<sup>TH</sup> day of October 2009, by the following vote:

AYES:

NOES:

ABSTENTIONS:

ABSENT:

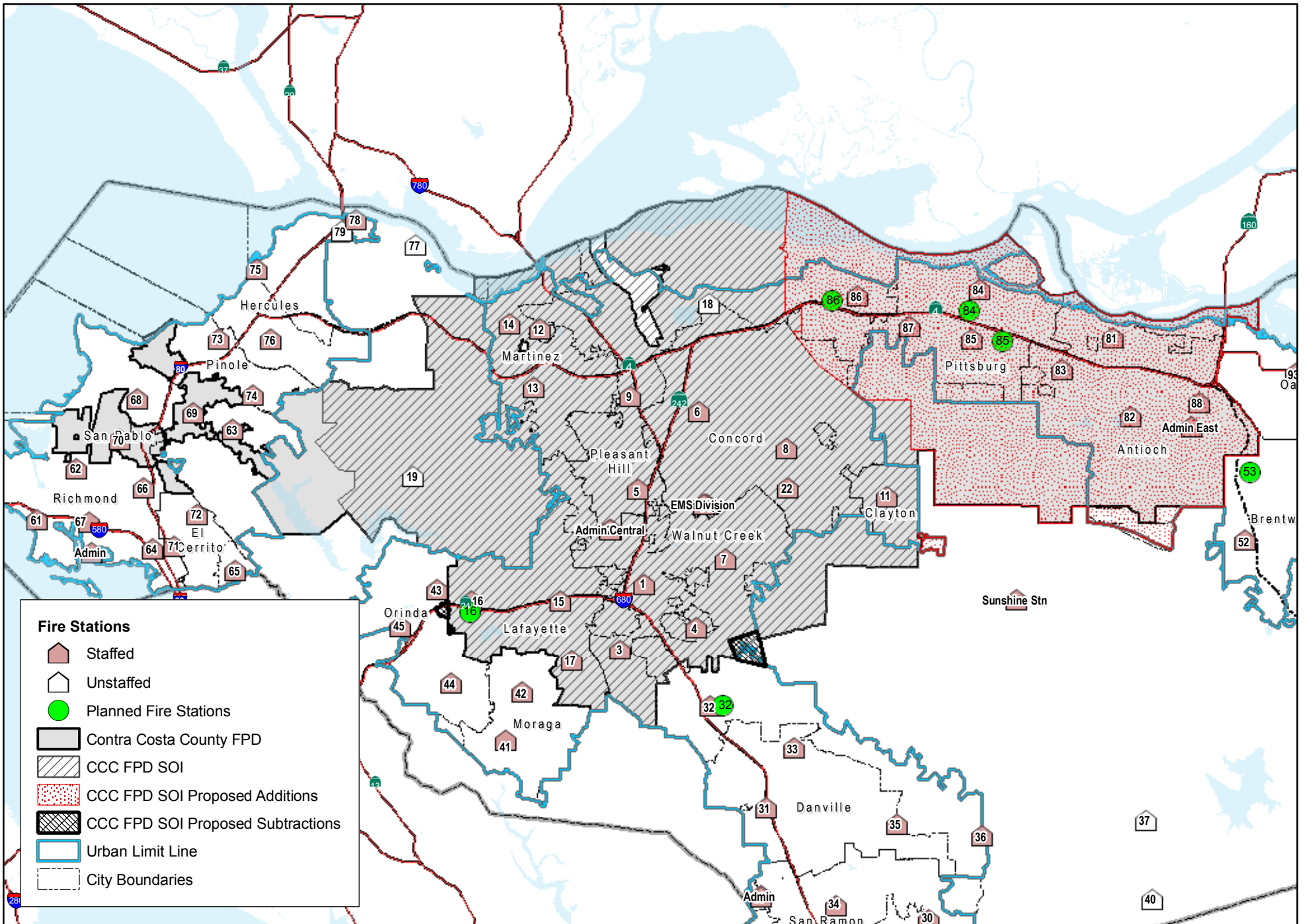
\_\_\_\_\_  
GAYLE B. UILKEMA, CHAIR, CONTRA COSTA LAFCO

*I hereby certify that this is a correct copy of a resolution passed and adopted by this Commission on the date stated above.*

Dated: October 14, 2009

\_\_\_\_\_  
Lou Ann Texeira, Executive Officer

# Contra Costa County Fire Protection District and Sphere of Influence



**Fire Stations**

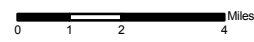
- Staffed
- Unstaffed
- Planned Fire Stations

**Boundaries and SOI**

- Contra Costa County FPD
- CCC FPD SOI
- CCC FPD SOI Proposed Additions
- CCC FPD SOI Proposed Subtractions
- Urban Limit Line
- City Boundaries

Map created 7/28/2009  
 by Contra Costa County Community Development, GIS Group  
 601 Pine Street, 4th Floor North Wing, Martinez, CA 94553-0095  
 37.59-48.456N 122.06-35.384W

This map was created by the Contra Costa County Community Development Department with data from the Contra Costa County GIS Program. Some base data, primarily City Limits, is derived from the CA State Board of Equalization's tax rate areas. While obligated to use this data the County assumes no responsibility for its accuracy. This map contains copyrighted information and may not be altered. It may be reproduced in its current state if the source is cited. Users of this map agree to read and accept the County of Contra Costa disclaimer of liability for geographic information.



**RESOLUTION OF THE CONTRA COSTA LOCAL AGENCY FORMATION COMMISSION**  
**APPROVING A SPHERE OF INFLUENCE UPDATE FOR**  
**MORAGA-ORINDA FIRE DISTRICT**

**WHEREAS**, Government Code §56425 requires the Local Agency Formation Commission (LAFCO) to develop and determine the sphere of influence (SOI) of each local governmental agency within the County; and

**WHEREAS**, Government Code §56425(f) requires that LAFCO review and update the SOI boundaries, as necessary, not less than once every five years; and

**WHEREAS**, Government Code §56430 requires that a municipal service review be conducted prior to or in conjunction with an SOI update; and

**WHEREAS**, LAFCO conducted a countywide review of fire and emergency medical service providers, including services provided by the Moraga-Orinda Fire District (MOFD) and adopted written determinations as required by Government Code §56430 on August 12, 2009; and

**WHEREAS**, the MSR report identified a number of SOI and governance structure options for MOFD; and

**WHEREAS**, the District's service boundary encompasses approximately 47 square miles, and its SOI and boundary are generally consistent; and

**WHEREAS**, in updating SOIs for fire service providers, LAFCO should consider the uniqueness of fire service areas as a result of automatic aid, mutual aid and contract service arrangements; and

**WHEREAS**, MOFD's existing SOI excludes 101 acres in eastern Orinda which were annexed to the District in 1998; and

**WHEREAS**, it is hereby proposed that MOFD's SOI be expanded to the 101 acres previously annexed to the District; and

**WHEREAS**, the MSR report identified a number of issues relating to cost-savings, efficiency, infrastructure challenges and revenue allocation among the affected local agencies which need to be addressed; and

**WHEREAS**, no change in regulation, land use or development will occur as a result of updating the District's SOI; and

**WHEREAS**, in the form and manner prescribed by law, the Executive Officer has given notice of a public hearing by this Commission regarding the SOI action; and

**WHEREAS**, the SOI update was duly considered at public meetings held on April 8, April 22, August 12 and October 14, 2009; and

**WHEREAS**, Contra Costa LAFCO heard and received all oral and written protests, objections and evidence that were made, presented or filed, and all persons present were given an opportunity to appear and be heard with respect to any matter pertaining to said SOI update.

**NOW, THEREFORE, BE IT RESOLVED, DETERMINED AND ORDERED** that Contra Costa LAFCO does hereby:

1. Expand the SOI for MOFD as generally depicted on Exhibit A attached hereto.
2. Encourage the District, the City of Orinda and the Town of Moraga to communicate regarding road and water infrastructure challenges and report back to LAFCO within 12 months.
3. Determine, as lead agency for the purposes of the California Environmental Quality Act (CEQA), that the SOI update is categorically exempt under §15061(b)(3) of the CEQA Guidelines, and direct staff to file a Notice of Exemption.
4. Determine that the Commission has considered the criteria set forth in Government Code §56425(e) as follows:
  - a. *The present and planned land uses in the area, including agricultural and open-space lands* – The District bounds encompass residential, commercial, institutional, agricultural and open space uses within the cities of Moraga and Orinda and surrounding unincorporated areas to the east and west of the cities. Present land uses in the incorporated areas are predominantly residential and commercial. The cities both contain significant open space. Land uses in the unincorporated areas are primarily open space. Future land uses within the existing SOI include new residential and open space development in the Rheem valley area (Moraga), residential and commercial development southwest of the Town of Moraga in the Bollinger Canyon area, as well as Orinda Village and Montanera Gateway in Orinda. The SOI expansion areas are located within the City of Orinda and consist of residential areas. The District has no land use authority. Contra Costa County and city plans include land uses and population growth that may impact the District’s services. There is Williamson Act land within the District’s boundaries and SOI.
  - b. *The present and probable need for public facilities and services in the area* – The District provides fire and emergency medical services including paramedic and ambulance transport. MOFD contracts with Contra Costa County Fire Protection District for dispatch and radio services. There is a present and probable need for public facilities and services in the existing SOI and in the SOI expansion area, which was annexed to the District in 1998. Service demand will increase with build-out of the cities. No changes in public facilities or services provided by the District will result from this SOI update.
  - c. *The present capacity of public facilities and adequacy of public services that the agency provides or is authorized to provide* – the MSR report did not identify any capacity or service adequacy issues that would prevent the District from continuing to serve its boundary area. Adjustment of the SOI as proposed will not affect the present capacity of public facilities and adequacy of services provided by MOFD.

- d. *The existence of any social or economic communities of interest in the area if the commission determines that they are relevant to the agency* – MOFD was formed in 1997 as an independent special district through the consolidation of the Moraga Fire Protection District and the Orinda Fire Protection District; there has been one boundary change to the District since its formation. The District is funded primarily through property taxes, within limited funding through ambulance fees, fire flow taxes, and miscellaneous revenues. The social and economic communities of interest include the cities of Moraga and Orinda and the unincorporated community of Canyon. Other communities of interest within the District include St. Mary’s College (Moraga), Redwood Regional Park, Robert Sibley Regional Preserve, Charles Lee Tilden Regional Park and Golf Course, and portions of Wildcat Canyon Regional Park and San Pablo and Briones reservoirs. The community of interest within the SOI expansion areas is the City of Orinda. Property owners within the District have an economic interest in receiving services from this investment. The SOI update will not affect the existence of any social or economic communities of interest in the areas that are relevant to MOFD.
  
- e. *Nature, location, extent, functions & classes of services to be provided* – MOFD service boundary encompasses approximately 47 square miles. The District provides fire prevention and suppression, advanced and basic life support for medical emergencies, ambulance transport, rescue, initial hazardous materials response, fire inspection, education and fire-related permit services. The District relies on AMR, a privately-owned ambulance company, for back-up ambulance services. There are five fire stations located within the District; three in Orinda and two in Moraga.

\* \* \* \* \*

PASSED AND ADOPTED THIS 14<sup>TH</sup> day of October 2009, by the following vote:

AYES:

NOES:

ABSTENTIONS:

ABSENT:

---

GAYLE B UILKEMA, CHAIR, CONTRA COSTA LAFCO

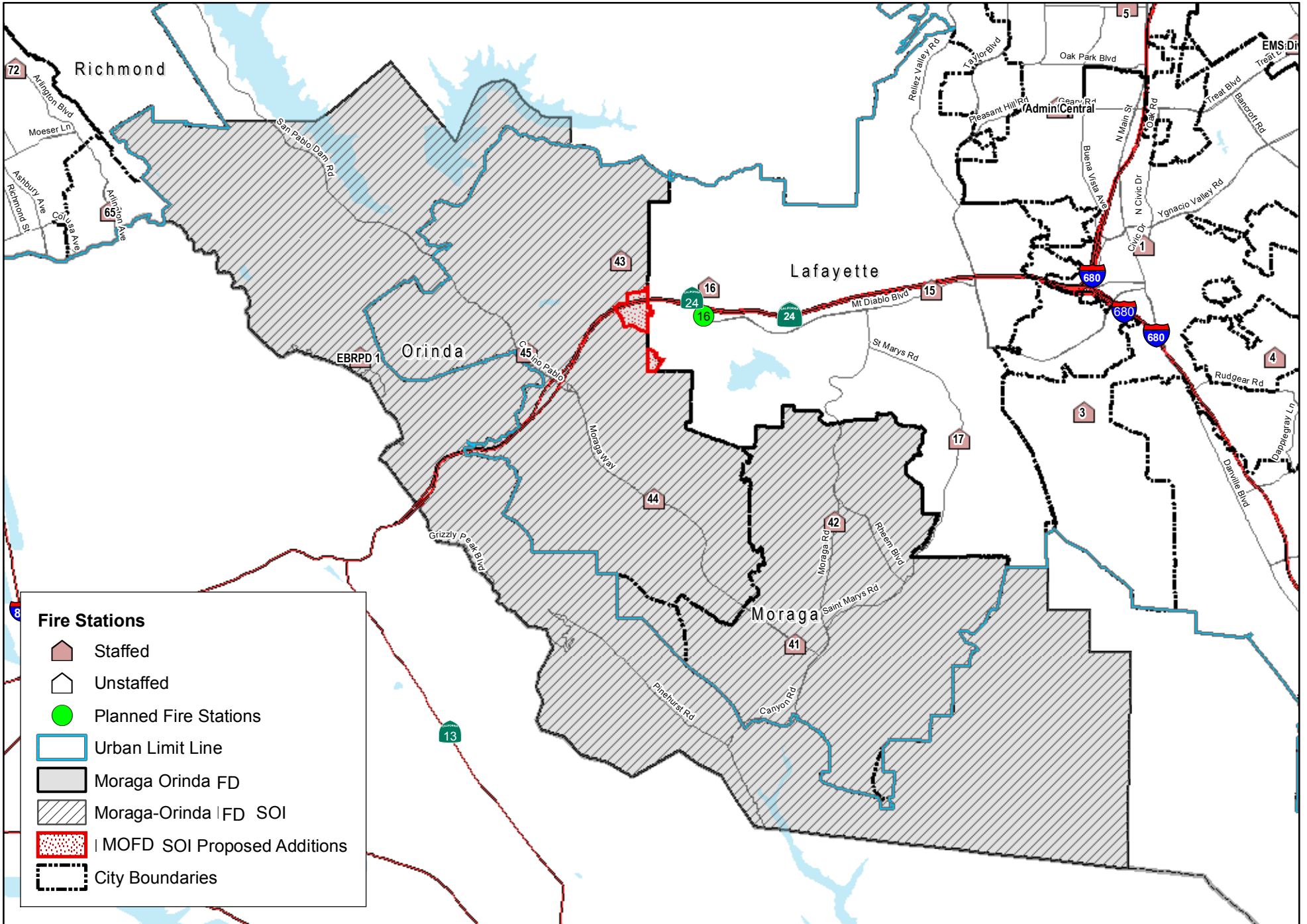
*I hereby certify that this is a correct copy of a resolution passed and adopted by this Commission on the date stated above.*

Dated: October 14, 2009

---

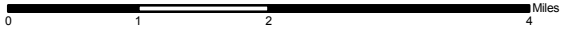
Lou Ann Texeira, Executive Officer

# Moraga-Orinda Fire District and Sphere of Influence



**Fire Stations**

- Staffed
- Unstaffed
- Planned Fire Stations
- Urban Limit Line
- Moraga Orinda FD
- Moraga-Orinda | FD SOI
- | MOFD SOI Proposed Additions
- City Boundaries



Map created 7/28/2009  
 by Contra Costa County Community Development, GIS Group  
 601 Pine Street, 4th Floor North Wing, Martinez, CA 94553-0195  
 37.59-48.456N 122.06-35.384W

This map was created by the Contra Costa County Community Development Department with data from the Contra Costa County GIS Program. Some base data, primarily City Limits, is derived from the CA State Board of Equalization's tax rate areas. While obligated to use this data the County assumes no responsibility for its accuracy. This map contains copyrighted information and may not be altered. It may be reproduced in its current state if the source is cited. Users of this map agree to read and accept the County of Contra Costa disclaimer of liability for geographic information.

**RESOLUTION OF THE CONTRA COSTA LOCAL AGENCY FORMATION COMMISSION**  
**APPROVING A SPHERE OF INFLUENCE UPDATE FOR**  
**SAN RAMON VALLEY FIRE PROTECTION DISTRICT**

**WHEREAS**, Government Code §56425 requires the Local Agency Formation Commission (LAFCO) to develop and determine the sphere of influence (SOI) of each local governmental agency within the County; and

**WHEREAS**, Government Code §56425(f) requires that LAFCO review and update the SOI boundaries, as necessary, not less than once every five years; and

**WHEREAS**, Government Code §56430 requires that a municipal service review be conducted prior to or in conjunction with an SOI update; and

**WHEREAS**, LAFCO conducted a countywide review of fire and emergency medical service providers, including services provided by the San Ramon Valley Fire Protection District (SRVFPD) and adopted written determinations as required by Government Code §56430 on August 12, 2009; and

**WHEREAS**, the MSR report identified a number of SOI and governance structure options for SRVFPD; and

**WHEREAS**, the District's service boundary encompasses approximately 118 square miles, and its SOI is smaller than the District's boundary area as a result of prior boundary reorganizations; and

**WHEREAS**, in updating SOIs for fire service providers, LAFCO should consider the uniqueness of fire service areas as a result of automatic aid, mutual aid and contract service arrangements; and

**WHEREAS**, SRVFPD's existing SOI excludes areas in the Tassajara Valley, Morgan Territory and Bogue Ranch areas, which were previously annexed to the District; and

**WHEREAS**, it is hereby proposed that SRVFPD's SOI be expanded to include these previously annexed areas as generally depicted on Exhibit A attached hereto; and

**WHEREAS**, the MSR report identified a service issue in the Crow Canyon and North Dublin areas in Alameda County, where SRVFPD responds to a high number of service calls; and

**WHEREAS**, no change in regulation, land use or development will occur as a result of updating the District's SOI; and

**WHEREAS**, in the form and manner prescribed by law, the Executive Officer has given notice of a public hearing by this Commission regarding the SOI action; and

**WHEREAS**, the SOI update was duly considered at public hearings held on April 8, April 22, August 12, and October 14, 2009; and

**WHEREAS**, Contra Costa LAFCO heard and received all oral and written protests, objections and evidence that were made, presented or filed, and all persons present were given an opportunity to appear and be heard with respect to any matter pertaining to said SOI update.

**NOW, THEREFORE, BE IT RESOLVED, DETERMINED AND ORDERED** that Contra Costa LAFCO does hereby:

1. Expand the SOI for SRVFPD as generally depicted on Exhibit A attached hereto.
2. Encourage SRVFPD and the Alameda County Fire Department to work together to achieve service/fiscal balance in this area.
3. Determine, as lead agency for the purposes of the California Environmental Quality Act (CEQA), that the SOI update is categorically exempt under §15061(b)(3) of the CEQA Guidelines, and direct staff to file a Notice of Exemption.
4. Determine that the Commission has considered the criteria set forth in Government Code §56425(e) as follows:
  - a. *The present and planned land uses in the area, including agricultural and open-space lands* – The District bounds encompass residential, commercial, Mixed-use, agricultural and open space uses within the cities of San Ramon and Danville and the unincorporated communities of Alamo, Blackhawk, Diablo, Tassajara Valley, and southern portions of Morgan Territory, along with portions of Dublin and Crow Canyon in Alameda County. Land uses in the SOI expansion areas are primarily open space and lower density rural residential in the unincorporated Tassajara Valley and Morgan Territory, with some agricultural in the Bollinger Canyon and Tassajara Valley areas; and primarily residential development in the Bogue Ranch area. The District has no land use authority. Contra Costa County and city plans include land uses and population growth that may impact the District’s services. There is Williamson Act land within the District’s boundaries and SOI.
  - b. *The present and probable need for public facilities and services in the area* – The District provides dispatch, fire and emergency medical services including paramedic and ambulance transport. There is a present and probable need for public facilities and services in the existing SOI and in the SOI expansion areas, which were previously annexed to the District. Service demand will increase with build-out of the cities. No changes in public facilities or services provided by the District will result from this SOI update.
  - c. *The present capacity of public facilities and adequacy of public services that the agency provides or is authorized to provide* – the MSR report did not identify any capacity or service adequacy issues that would prevent the District from continuing to serve its boundary area. Adjustment of the SOI as proposed will not affect the present capacity of public facilities and adequacy of services provided by SRVFPD.
  - d. *The existence of any social or economic communities of interest in the area if the commission determines that they are relevant to the agency* – SRVFPD was originally formed in 1921 as an independent special district known as the Danville Fire District; there have been numerous reorganizations and boundary changes to the District since its formation. The District is funded primarily

through property taxes, within limited funding through ambulance fees and service charges, intergovernmental and miscellaneous revenues. The social and economic communities of interest include the cities of Danville and San Ramon, and the unincorporated communities of Alamo, Blackhawk and Diablo. The southern portions of Morgan Territory and the Tassajara Valley are included with the SRFPD bounds and SOI expansion areas. Property owners within the District have an economic interest in receiving services from this investment. The SOI update will not affect the existence of any social or economic communities of interest in the areas that are relevant to SRVFPD.

- e. *Nature, location, extent, functions & classes of services to be provided* – SRVFPD service boundary encompasses approximately 118 square miles. The District provides fire prevention and suppression, advanced and basic life support for medical emergencies, ambulance transport, rescue, initial hazardous materials response, fire inspection, education and fire-related permit services. There District has nine staffed five stations, and two stations staffed by on-call firefighters. Of the staffed stations, four are located in the San Ramon, three in the Danville, one in Alamo and one in the Tassajara Valley. The two stations staffed by on-call firefighters are located in Morgan Territory.

\* \* \* \* \*

PASSED AND ADOPTED THIS 14<sup>TH</sup> day of October 2009, by the following vote:

AYES:

NOES:

ABSTENTIONS:

ABSENT:

---

GAYLE B. UILKEMA, CHAIR, CONTRA COSTA LAFCO

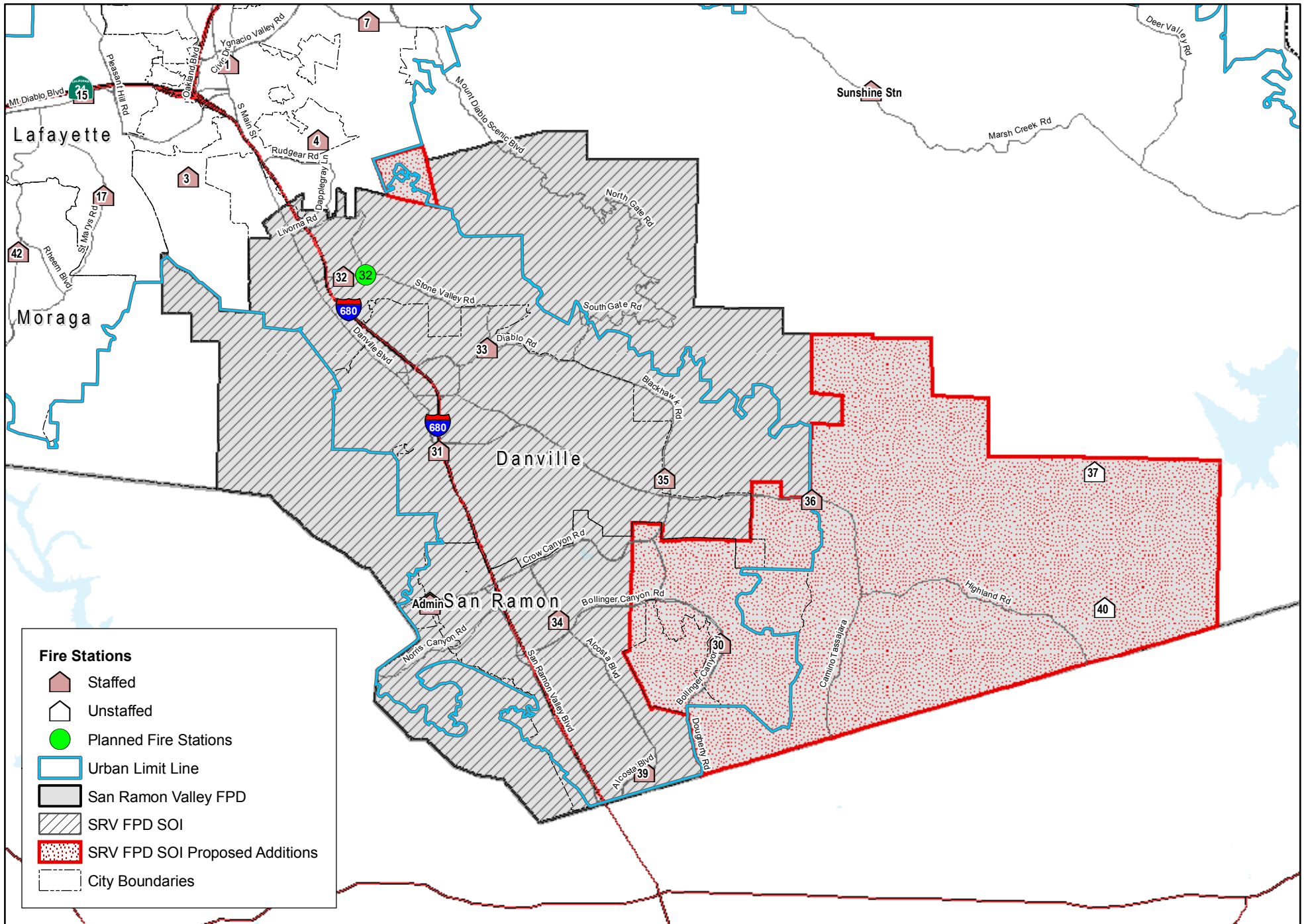
*I hereby certify that this is a correct copy of a resolution passed and adopted by this Commission on the date stated above.*

Dated: October 14, 2009

---

Lou Ann Texeira, Executive Officer

# San Ramon Valley Fire Protection District and Sphere of Influence



**Fire Stations**

- Staffed
- Unstaffed
- Planned Fire Stations

Urban Limit Line

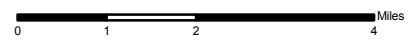
San Ramon Valley FPD

SRV FPD SOI

SRV FPD SOI Proposed Additions

City Boundaries

This map was created by the Contra Costa County Community Development Department with data from the Contra Costa County GIS Program. Some base data, primarily City Limits, is derived from the CA State Board of Equalization's tax rate areas. While obligated to use this data the County assumes no responsibility for its accuracy. This map contains copyrighted information and may not be altered. It may be reproduced in its current state if the source is cited. Users of this map agree to read and accept the County of Contra Costa disclaimer of liability for geographic information.



**RESOLUTION OF THE CONTRA COSTA LOCAL AGENCY FORMATION COMMISSION**  
**APPROVING A SPHERE OF INFLUENCE UPDATE FOR**  
**EAST CONTRA COSTA FIRE PROTECTION DISTRICT**

**WHEREAS**, Government Code §56425 requires the Local Agency Formation Commission (LAFCO) to develop and determine the sphere of influence (SOI) of each local governmental agency within the County; and

**WHEREAS**, Government Code §56425(f) requires that LAFCO review and update the SOI boundaries, as necessary, not less than once every five years; and

**WHEREAS**, Government Code §56430 requires that a municipal service review be conducted prior to or in conjunction with an SOI update; and

**WHEREAS**, LAFCO conducted a countywide review of fire and emergency medical service providers, including services provided by the East Contra Costa Fire Protection District (ECCFPD) and adopted written determinations as required by Government Code §56430 on August 12, 2009; and

**WHEREAS**, the District's service boundary encompasses approximately 238 square miles, and its SOI is conterminous with the boundary; and

**WHEREAS**, in updating SOIs for fire service providers, LAFCO should consider the uniqueness of fire service areas as a result of automatic aid, mutual aid and contract service arrangements; and

**WHEREAS**, the MSR report identified a number of SOI and governance structure options for ECCFPD, including expansion, reduction and a zero SOI to signal a future reorganization; and

**WHEREAS**, the MSR report identified a number of significant governance, service and fiscal issues which need to be addressed; and

**WHEREAS**, the ECCFPD's boundary includes the Roddy Ranch property, which is within the City of Antioch that receives fire service from the Contra Costa County Fire Protection District; and

**WHEREAS**, the Roddy Ranch property should be removed from the ECCFPD's SOI; and

**WHEREAS**, no change in regulation, land use or development will occur as a result of updating the District's SOI; and

**WHEREAS**, in the form and manner prescribed by law, the Executive Officer has given notice of a public hearing by this Commission regarding the SOI action; and

**WHEREAS**, the SOI update was duly considered at public meetings held on April 8, April 22, August 12 and October 14, 2009; and

**WHEREAS**, Contra Costa LAFCO heard and received all oral and written protests, objections and evidence that were made, presented or filed, and all persons present were given an opportunity to appear and be heard with respect to any matter pertaining to said SOI update.

**NOW, THEREFORE, BE IT RESOLVED, DETERMINED AND ORDERED** that Contra Costa LAFCO does hereby:

1. Reduce the SOI to remove the Roddy Ranch property.
2. Determine, as lead agency for the purposes of the California Environmental Quality Act (CEQA), that the SOI update is categorically exempt under §15061(b)(3) of the CEQA Guidelines, and direct staff to file a Notice of Exemption.
3. Determine that the Commission has considered the criteria set forth in Government Code §56425(e) as follows:
  - a. *The present and planned land uses in the area, including agricultural and open-space lands* – The District bounds encompass residential, commercial, mixed-use, agricultural, recreational, open space and watershed uses located throughout the District. The predominant uses are agricultural and open space, with the agricultural core located west of Discovery Bay and Byron, and pasture lands throughout Morgan Territory, Marsh Creek, Knightsen and northern Bethel Island. The District contains expansive open space including Morgan Territory Regional Park, Vasco Caves Regional Park, Contra Loma Regional Park, Round Valley Regional Preserve, Black Diamond Mines Regional Preserve, and the northern portion of Mount Diablo State Park. Residential and commercial areas are concentrated in the cities of Brentwood and Oakley, with some residential areas in the unincorporated communities of Discovery Bay and Bethel Island. Future growth is expected to occur in Brentwood, Oakley, Discovery Bay (Byron (airport) and Bethel Island (Delta Coves). The District has no land use authority. Contra Costa County and city plans include land uses and population growth that may impact the District’s services. There is Williamson Act land within the District’s boundaries and SOI.
  - b. *The present and probable need for public facilities and services in the area* – The District provides fire and emergency medical services including basic life support (BLS). Ambulance transport and advanced life support (ALS) is provided by AMR, a privately-owned ambulance company. ECCFPD contracts with Contra Costa County Fire Protection District (ConFire) for dispatch, radio, information and fire prevention services. There is a present and probable need for public facilities and services in the existing SOI and in the SOI expansion areas identified in the MSR report. Service demand will increase with build-out of the cities and in the designated unincorporated areas. No changes in public facilities or services provided by the District will result from this SOI update.
  - c. *The present capacity of public facilities and adequacy of public services that the agency provides or is authorized to provide* – the MSR report indicated that service levels are higher in urban and suburban areas and pockets than in outlying areas. Most fire stations are located in the eastern portion of the District. Travel times are longer to the open space and grazing lands in the western and southern portions of the District, and in the surrounding islands.
  - d. *The existence of any social or economic communities of interest in the area if the commission determines that they are relevant to the agency* – ECCFPD was formed in 2002 as a county-dependent district through the consolidation of

Bethel Island, East Diablo and Oakley fire protection districts; there have been no boundary change to the District since its formation in 2002. The District is funded primarily through property taxes, within limited funding through intergovernmental and miscellaneous revenues. The social and economic communities of interest include the cities of Brentwood and Oakley, and the unincorporated communities of Bethel Island, Byron, Discovery Bay and Knightsen. Property owners within the District have an economic interest in receiving services from this investment. The SOI update will not affect the existence of any social or economic communities of interest in the areas that are relevant to ECCFPD.

- e. *Nature, location, extent, functions & classes of services to be provided* – ECCFPD service boundary encompasses approximately 238 square miles. The District provides fire and emergency medical services including BLS. Ambulance transport and ALS is provided by AMR, a privately-owned ambulance company. ECCFPD contracts with ConFire for dispatch, radio, information and fire prevention services. The District has nine staffed fire station; three in Brentwood, two in Discovery Bay, one in Oakley, Knightsen, Bethel Island and Byron. The CALFIRE Sunshine Station also serves the western portion of the District.

\*\*\*\*\*

PASSED AND ADOPTED THIS 14<sup>TH</sup> day of October 2009, by the following vote:

AYES:

NOES:

ABSTENTIONS:

ABSENT:

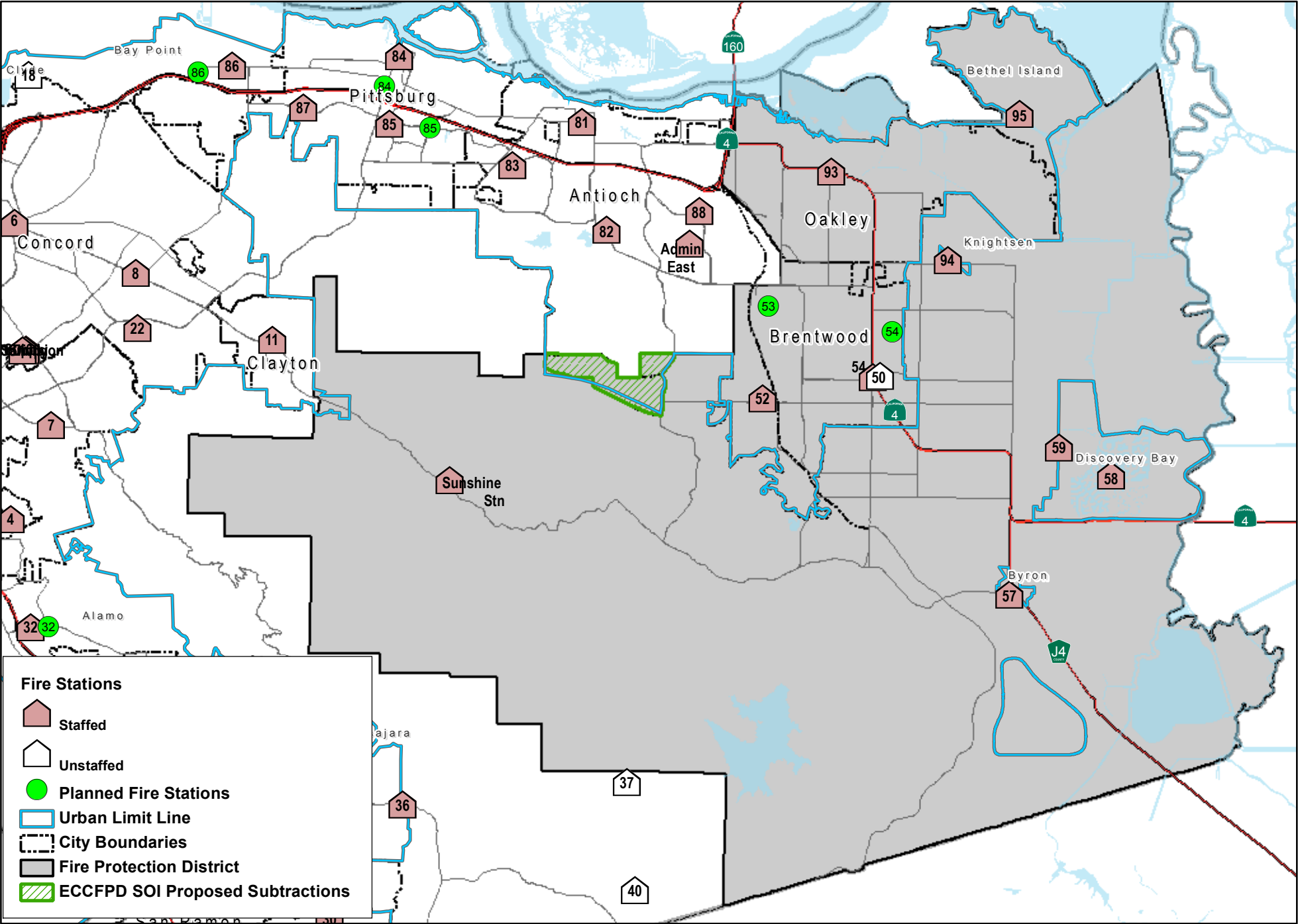
\_\_\_\_\_  
GAYLE B. UILKEMA, CHAIR, CONTRA COSTA LAFCO

*I hereby certify that this is a correct copy of a resolution passed and adopted by this Commission on the date stated above.*

Dated: October 14, 2009

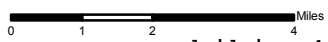
\_\_\_\_\_  
Lou Ann Texeira, Executive Officer

# East Contra Costa Fire Protection District



Map created 7/28/2009  
 by Contra Costa County Community Development, GIS Group  
 601 Pine Street, 4th Floor North Wing, Martinez, CA 94553-0095  
 37.59-48.459N 122.06-35.384W

This map was created by the Contra Costa County Community Development Department with data from the Contra Costa County GIS Program. Some base data, primarily City Limits, is derived from the CA State Board of Equalization's tax rate areas. While obligated to use this data the County assumes no responsibility for its accuracy. This map contains copyrighted information and may not be altered. It may be reproduced in its current state if the source is cited. Users of this map agree to read and accept the County of Contra Costa disclaimer of liability for geographic information.



**RESOLUTION OF THE CONTRA COSTA LOCAL AGENCY FORMATION COMMISSION**  
**APPROVING A SPHERE OF INFLUENCE UPDATE FOR**  
**COUNTY SERVICE AREA EM-1**

**WHEREAS**, Government Code §56425 requires the Local Agency Formation Commission (LAFCO) to develop and determine the sphere of influence (SOI) of each local governmental agency within the County; and

**WHEREAS**, Government Code §56425(f) requires that LAFCO review and update the SOI boundaries, as necessary, not less than once every five years; and

**WHEREAS**, Government Code §56430 requires that a municipal service review be conducted prior to or in conjunction with an SOI update; and

**WHEREAS**, LAFCO conducted a countywide review of fire and emergency medical service providers, including services provided by County Service Area (CSA) EM-1, and adopted written determinations as required by Government Code §56430 on August 12, 2009; and

**WHEREAS**, the MSR report identified one SOI option for CSA EM-1 – retain the existing SOI; and

**WHEREAS**, the District's service boundary is countywide and encompasses approximately 720 square miles; its SOI is coterminous with the District's boundary; and

**WHEREAS**, the MSR report identified a service challenge relating to dispatch time which needs to be addressed; and

**WHEREAS**, no change in regulation, land use or development will occur as a result of updating the District's SOI; and

**WHEREAS**, in the form and manner prescribed by law, the Executive Officer has given notice of a public hearing by this Commission regarding the SOI action; and

**WHEREAS**, the SOI update was duly considered at public meetings held on April 8, April 22, August 12, and October 14, 2009; and

**WHEREAS**, Contra Costa LAFCO heard and received all oral and written protests, objections and evidence that were made, presented or filed, and all persons present were given an opportunity to appear and be heard with respect to any matter pertaining to said SOI update.

**NOW, THEREFORE, BE IT RESOLVED, DETERMINED AND ORDERED** that Contra Costa LAFCO does hereby:

1. Retain the existing coterminous SOI for CSA EM-1 as generally depicted on Exhibit A attached hereto.
2. Encourage the District to coordinate a 911 dispatch study in conjunction with the Contra Costa County Sheriff and Public Safety Answering Point (PSAP) managers' group to address dispatch issues.
3. Determine, as lead agency for the purposes of the California Environmental Quality Act (CEQA), that the SOI update is categorically exempt under §15061(b)(3) of the CEQA Guidelines, and direct staff to file a Notice of Exemption.

4. Determine that the Commission has considered the criteria set forth in Government Code §56425(e) as follows:
  - a. *The present and planned land uses in the area, including agricultural and open-space lands* – The District bounds encompass a wide variety of present and planned land uses, as it includes the entirety of Contra Costa County. The District has no land use authority. Contra Costa County and city plans include land uses and population growth that may impact the District’s services. There is Williamson Act land within the District’s boundaries and SOI.
  - b. *The present and probable need for public facilities and services in the area* – The District is a financing mechanism to provide enhanced emergency medical services to Contra Costa County. There is a present and probable need for public facilities and services in the County, which are enhanced by assessments collected through the CSA. Service demand will increase with development. No changes in public facilities or services provided by the District will result from this SOI update.
  - c. *The present capacity of public facilities and adequacy of public services that the agency provides or is authorized to provide* – the MSR report indicates that the District faces long-term financing constraints due to the assessment being capped at current levels. The current financing is not adequate to deliver long-term services given the historical inflation patterns. Retention of the SOI will not affect the present capacity of public facilities and adequacy of services provided by CSA EM-1.
  - d. *The existence of any social or economic communities of interest in the area if the commission determines that they are relevant to the agency* – CSA EM-1 was formed in 1989 as a countywide dependent district of the County. The District is primarily financed through assessments. The social and economic communities of interest include the entirety of Contra Costa County. Property owners within the District have an economic interest in receiving services from this investment. The SOI update will not affect the existence of any social or economic communities of interest in the areas that are relevant to CSA EM-1.
  - e. *Nature, location, extent, functions & classes of services to be provided* – CSA EM-1 service boundary encompasses the entire County - approximately 720 square miles. The District is a financing mechanism to provide enhanced emergency medical services to Contra Costa County. District office is located in Martinez.

\* \* \* \* \*

PASSED AND ADOPTED THIS 14<sup>TH</sup> day of October 2009, by the following vote:

AYES:  
 NOES:  
 ABSTENTIONS:  
 ABSENT:

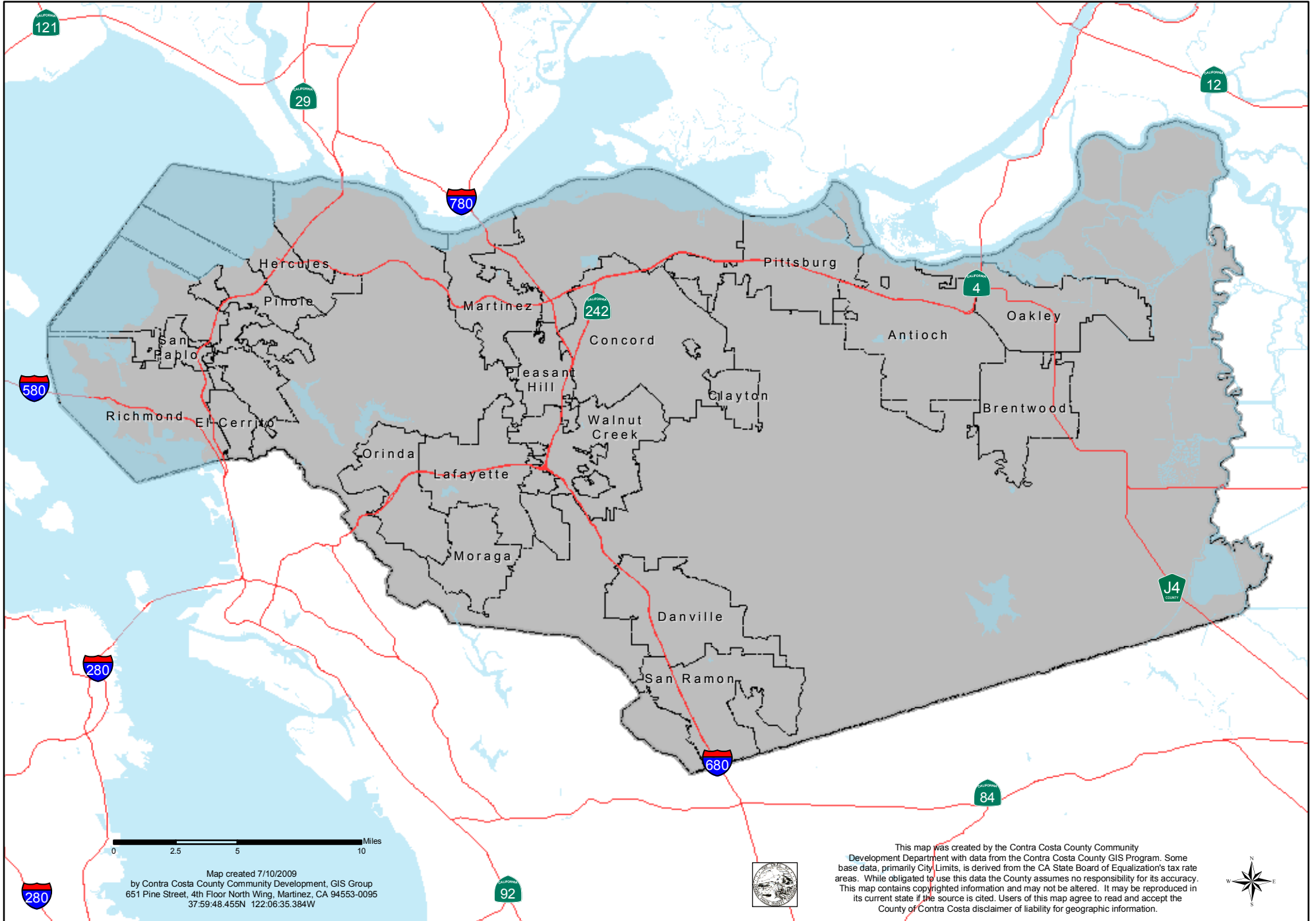
\_\_\_\_\_  
 GAYLE B. UILKEMA, CHAIR, CONTRA COSTA LAFCO

*I hereby certify that this is a correct copy of a resolution passed and adopted by this Commission on the date stated above.*

Dated: October 14, 2009

\_\_\_\_\_  
 Lou Ann Texeira, Executive Officer

# County Service Area EM-1 (Emergency Services)



Map created 7/10/2009  
by Contra Costa County Community Development, GIS Group  
651 Pine Street, 4th Floor North Wing, Martinez, CA 94553-0095  
37:59:48.455N 122:06:35.384W

This map was created by the Contra Costa County Community Development Department with data from the Contra Costa County GIS Program. Some base data, primarily City Limits, is derived from the CA State Board of Equalization's tax rate areas. While obligated to use this data the County assumes no responsibility for its accuracy. This map contains copyrighted information and may not be altered. It may be reproduced in its current state if the source is cited. Users of this map agree to read and accept the County of Contra Costa disclaimer of liability for geographic information.